

**For high throughput sample filtration**

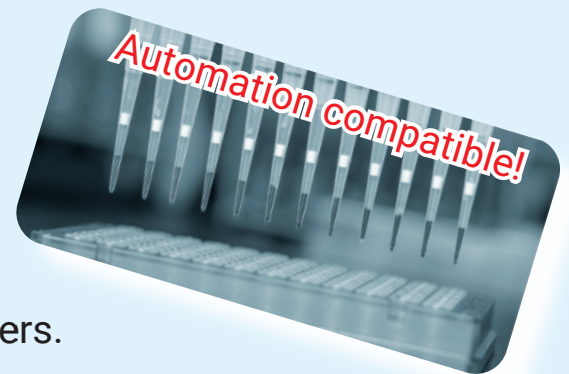
**CS CRIE's**

**by centrifuge**

# Centrifugal Filtration Plate

**Make your sample filtration from 96/384-well plate fast and easy!**

Looking for a cost-effective, fast and easy method to filtrate samples in a 96 or 384-well plate? Our simple, but powerful sample filtration mesh bottom plate by centrifuge makes you save the cost and time compared to using conventional cell strainers.



## Available in Two Formats

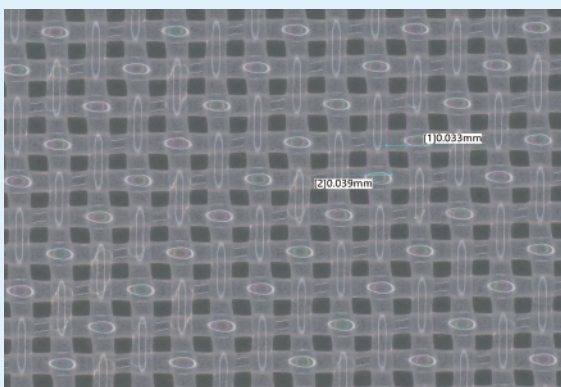
for 96-well



for 384-well



## Highly Homogeneous Pore Size



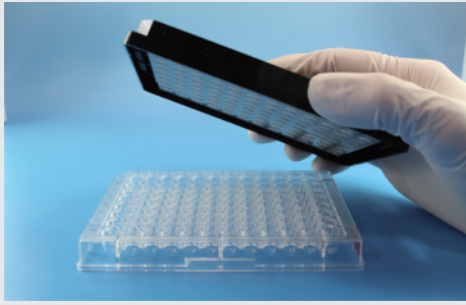
### Four Pore Sizes:

0.45  $\mu\text{m}$ , 30  $\mu\text{m}$ , 70  $\mu\text{m}$  and 100  $\mu\text{m}$  of products are available

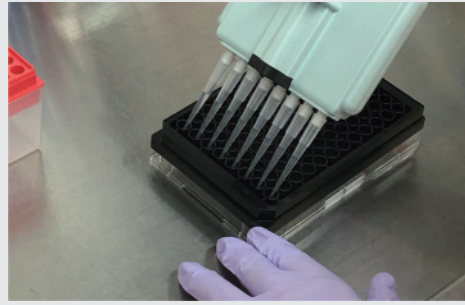
- \* Customized pore size is available!  
Contact us for designing your own mesh bottom plate!
- \* Cells will not pass through mesh with 0.45  $\mu\text{m}$  pore size.



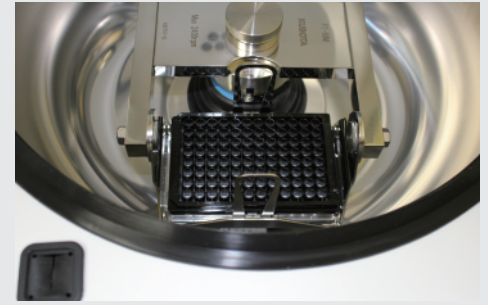
## How to Use



(1) Stack filtration plate on the new microplate.



(2) Add your samples to filtration plate.



(3) Centrifuge the stacked plates to filtrate.

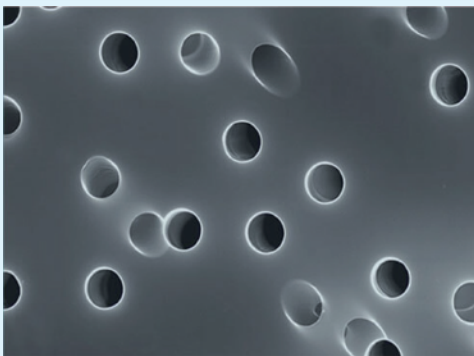


## Product and Price List

CSCRIE Centrifugal Filtration Plate, 96-well ( 10 plates )		CSCRIE Centrifugal Filtration Plate, 384-well ( 5 plates )	
Product Code	Pore Size	Product Code	Pore Size
R-CSC081-02	0.45 $\mu\text{m}$	R-CSC0813-02	0.45 $\mu\text{m}$
R-CSC078-02	30 $\mu\text{m}$	R-CSC0783-02	30 $\mu\text{m}$
R-CSC079-02	70 $\mu\text{m}$	R-CSC0793-02	70 $\mu\text{m}$
R-CSC080-02	100 $\mu\text{m}$	R-CSC0803-02	100 $\mu\text{m}$



## Design Your Own Filtration Plate!



Mesh size : 0.45  $\mu\text{m}$

Need an original filtration plate for your experiments?

We have an exceptional expertise and technologies to deliver you the desired custom product, in the range of 0.1  $\mu\text{m}$  to 300  $\mu\text{m}$  of pore size!

**Request us now!**



Learn more :



[www.cscrie-eng.com/contents/meshplate/](http://www.cscrie-eng.com/contents/meshplate/)

## Manufacturer : CS CRIE CO., LTD.

57-1 Ogahara, Makishimacho, Uji-shi, Kyoto 611-0041, Japan

TEL.+81-774-29-9037

E-mail: [yagi@cstec-jp.com](mailto:yagi@cstec-jp.com)

Website : <https://www.cscrie-eng.com>

Feel free to contact us about any question, quote and sample request and customization project!

